



Ayuroma Centre

Ayuroma Centre

Manufacturer Of Essential Oils

GST No.: 09AMLPK4254H1ZT

IEC : 0606003053

Technical Data Sheet

Basil Essential Oil

A.		General Information			
I	Product Name	Basil oil			
II	Batch/ Lot No.	2342052901			
III	CAS Number	8015-73-4			
IV	Botanical Name	<i>Ocimum basilicum</i>			
V	Family	Lamiaceae			
VI	Country of Origin	India			
VII	Plant Part used	Leaves			
VIII	Extraction Method	Steam distillation			
IX	Shelf Life	3 years			
B.		Description & Uses			
Basil oil possesses excellent anti-inflammatory properties that work well in warding off skin irritations, small wounds and sores. The soothing effect of basil leaves help in healing eczema. The goodness of vitamin C boosts skin cells metabolism and elasticity. It can be applied topically to a painful area, taken internally, or diffused throughout your home. Aside from its uses as a muscle relaxer, basil oil can also help with sluggishness, fatigue, and depression.					
C.		Physical Analysis Report			
		Parameter	Result		
I	Appearance	Colourless to pale yellow, free flowing liquid			
II	Odour	Sweet-spicy, slightly green, fresh odour			
III	Solubility	Soluble in 90% ethanol			
IV	Flash point	70.5°C			
V	Boling point	N/A			
		Parameter	Minimum	Maximum	Result
VI	Specific Gravity (20°C)	0.9260	0.9480	0.9398	
VII	Refractive Index (20°C)	1.4920	1.5220	1.5021	
VIII	Optical Rotation (23°C)	-9.0°	-2.0°	-6.81	
D.		Gas Chromatography Analysis Report			
		Constituents	Minimum (%)	Maximum (%)	Result (%)
I	Methyl chavicol	65	70	69.47	
II	Linalool	15	25	19.63	
III	Bisabolene	1.5	2.5	1.60	





Ayuroma Centre

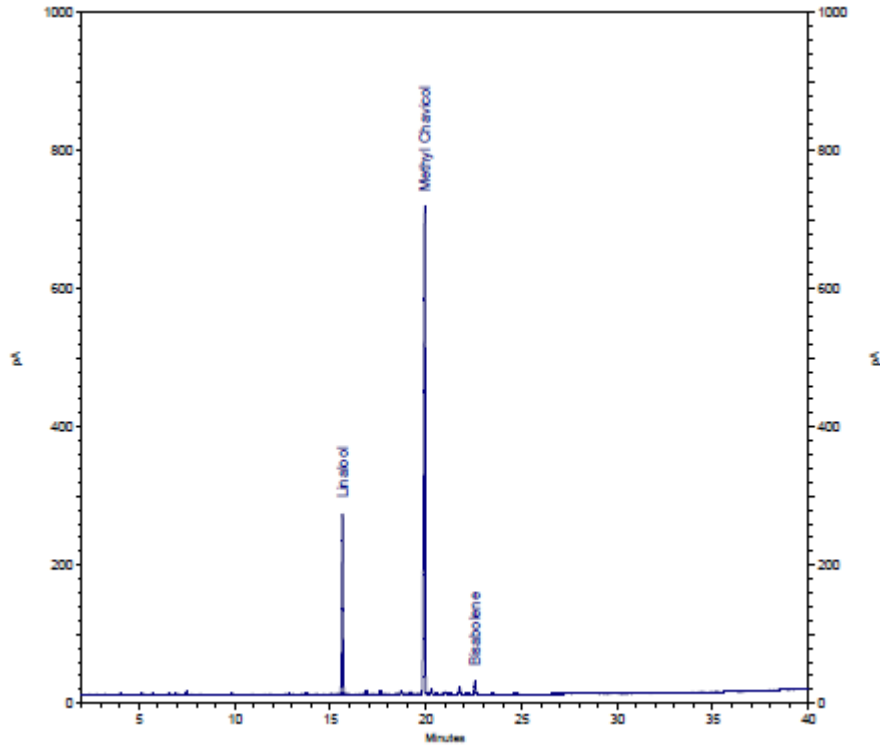
Ayuroma Centre

Manufacturer Of Essential Oils

GST No.: 09AMLPK4254H1ZT

IEC : 0606003053

E.	Chromatogram
-----------	---------------------



Representative Chromatogram of Basil Oil (2342052901).

F.	Declaration
	This information is based upon the present state of our knowledge. The analysis and statements herein constitute the most complete information available to Ayuroma Centre.

Kalpna

(Dr. Kalpana Katiyar)
Head, ATRIC

