



Ayuroma Centre

Ayuroma Centre

Manufacturer Of Essential Oils

GST No.: 09AMLPK4254H1ZT

IEC : 0606003053

Technical Data Sheet Clove Leaf Essential Oil

A.		General Information			
I	Product Name	Clove Leaf Oil			
II	Batch/ Lot No.	2442050104			
III	CAS Number	8000-34-8			
IV	Botanical Name	<i>Eugenia caryophyllus</i>			
V	Family	Myrtaceae			
VI	Country of Origin	India			
VII	Plant Part used	Leaves			
VIII	Extraction Method	Steam distillation			
IX	Shelf Life	3 years			
B.		Description & Uses			
Clove leaf oil used as an antimicrobial, to help kill bacteria, as a pain reliever for conditions such as toothache and muscle pain, for digestive upset and also used to relieve respiratory conditions like cough and asthma. Clove oil is used cream in the treatment of anal fissures with stool softeners and lignocaine cream.					
C.		Physical Analysis Report			
		Parameter	Result		
I	Appearance	Colourless to pale yellow free flowing clear liquid			
II	Odour	Warm spicy eugenol like odour			
III	Solubility	Soluble in 90% alcohol			
IV	Flash point	93°C			
V	Boling point	N/A			
		Parameter	Minimum	Maximum	Result
VI	Specific Gravity (20°C)	0.9910	1.0650	1.0480	
VII	Refractive Index (29.1°C)	1.5200	1.5400	1.5329	
VIII	Optical Rotation (29.3°C)	-5.0°	+5.0°	-1.19°	
D.		Gas Chromatography Analysis Report			
		Constituents	Minimum (%)	Maximum (%)	Result (%)
I	Eugenol	80	86	85.02	
II	Beta Caryophyllene	8	12	10.67	





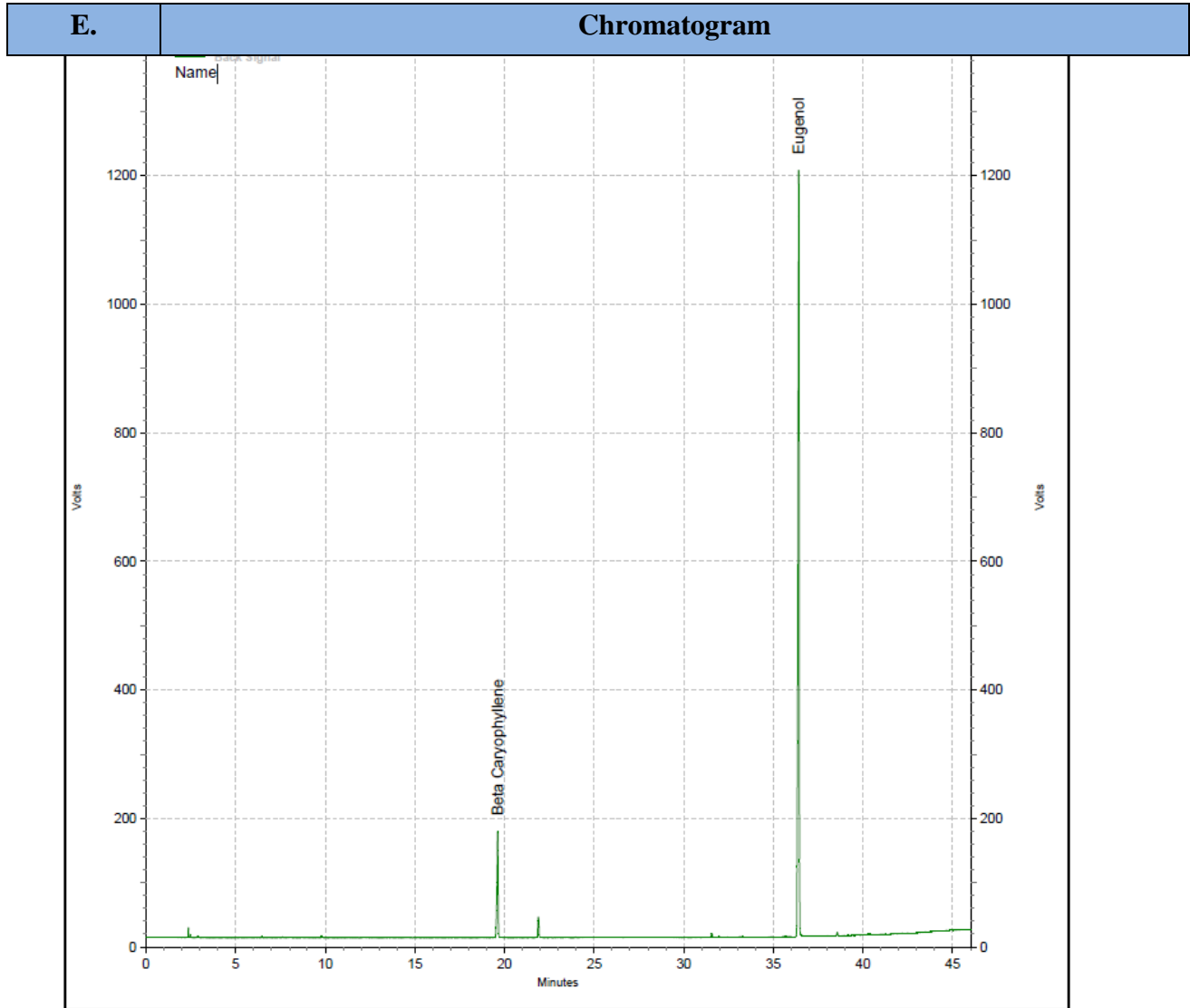
Ayuroma Centre

Ayuroma Centre

Manufacturer Of Essential Oils

GST No.: 09AMLPK4254H1ZT

IEC : 0606003053



Representative Chromatogram of Clove Leaf Oil (2442050104).

F.	Declaration
	This information is based upon the present state of our knowledge. The analysis and statements herein constitute the most complete information available to Ayuroma Centre.

Kalpna

(Dr. Kalpana Katiyar)
Head, ATRIC

