



Ayuroma Centre

# Ayuroma Centre

Manufacturer Of Essential Oils

GST No.: 09AMLPK4254H1ZT

IEC : 0606003053

## Technical Data Sheet Geranium (E) Essential Oil

A.		General Information			
I	Product Name	Geranium Oil (E)			
II	Batch/ Lot No.	2442050702			
III	CAS Number	8000-46-2			
IV	Botanical Name	<i>Pelargonium graveolens</i>			
V	Family	Geraniaceae			
VI	Country of Origin	India			
VII	Plant Part used	Leaves and stalks			
VIII	Extraction Method	Steam distillation			
IX	Shelf Life	3 years			
B.		Description & Uses			
Geranium oil used in aromatherapy applications, Geranium Essential Oil reduces feelings of stress, anxiety, sadness, fatigue, and tension, enhances concentration, improves cognitive function, and balances the emotions as well as the hormones and also used in cosmetically or topically in general, Geranium Essential Oil is reputed to effectively eliminate dead cells, tighten the skin, promote the regeneration of new skin, and diminish signs of aging.					
C.		Physical Analysis Report			
		Parameter	Result		
I	Appearance	Light greenish colour, free flowing liquid			
II	Odour	Floral rose-like			
III	Solubility	Soluble in 90% alcohol			
IV	Flash point	84°C			
V	Boling point	N/A			
		Parameter	Minimum	Maximum	Result
VI	Specific Gravity (20°C)	0.8710	0.9050	0.8944	
VII	Refractive Index (20°C)	1.4510	1.4750	1.4653	
VIII	Optical Rotation (31.2°C)	-15°	-5°	-11.72°	
D.		Gas Chromatography Analysis Report			
		Constituents	Minimum (%)	Maximum (%)	Result (%)
I	Citronellol	25	35	28.77	
II	Geraniol	10	15	14.72	





**Ayuroma Centre**

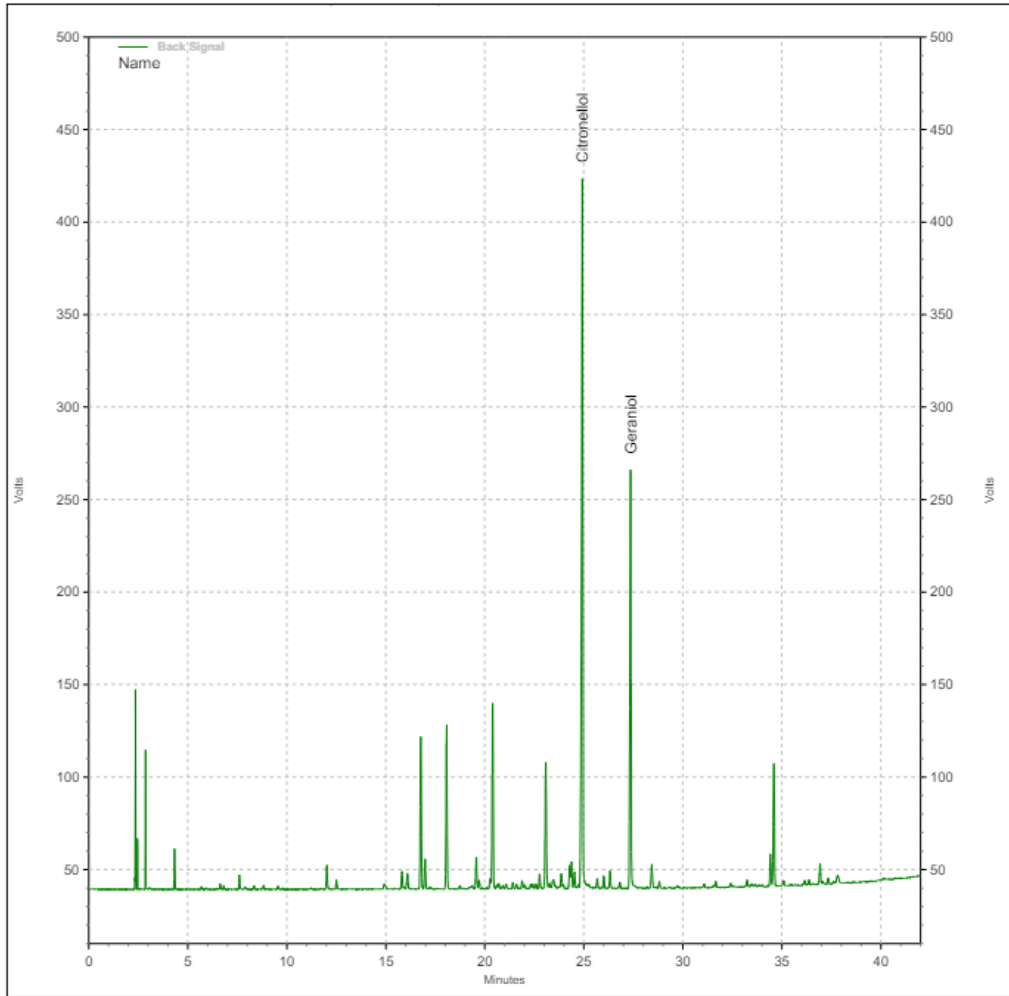
# Ayuroma Centre

*Manufacturer Of Essential Oils*

GST No.: 09AMLPK4254H1ZT

IEC : 0606003053

<b>E.</b>	<b>Chromatogram</b>
-----------	---------------------



Representative Chromatogram of Geranium Oil (E) (2442050702).

<b>F.</b>	<b>Declaration</b>
	This information is based upon the present state of our knowledge. The analysis and statements herein constitute the most complete information available to Ayuroma Centre.

*Kalpna*

(Dr. Kalpana Katiyar)  
Head, ATRIC

